



MRI AMBIANCE SYSTEMS



MRI Compatible LED Monitor

32" or 55" (optional)
1920 x 1080 (16:9)
Full HD
Fiber optic connection
Compatible with fMRI examinations

MRI Compatible Projector

1920x1080 Full HD
Brightness (Lumens): 3200
Color Contrast: 30.000:1
Display Size (in.): 30 - 300 in.
Fiber optic connection
Integrated Speakers: 40 W

RGB LED Light

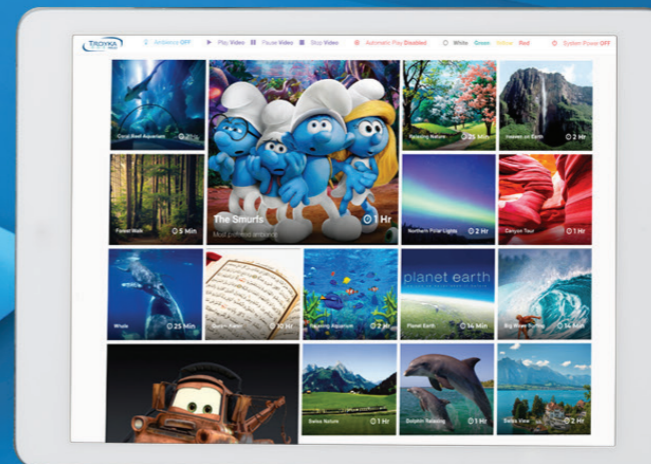
1 million color range
The software runs algorithm which real-time analyze the video on the screen, find main RGB color code and stream it to the LED RGB light.



MRI In - Bore Movie Experince



In - bore MRI Sound System



MRI Entertainment Software

Real time media integration playback
Over 250 animations, videos and images to choose.
Run LED monitor, projector, room ambient sound, headset sound and LED lights dynamically by the click of the button of touch screen.
Real-time streaming of patient experience content



İOSB Has Emek Sanayi Sitesi, 2284 sokak, No: 48,
Ostim - ANKARA - TURKEY

P: +90 312 265 00 96
F: +90 312 265 00 96
E: info@troykamed.com

www.troykamed.com